

Measuring  
**Neighborhood Health**  
With Emergency Department & Hospital  
Data

Tracy Flood MD PhD

Tom Schmitt PhD

James Walters MS

Rishi Guha Ray MPH



# About Us



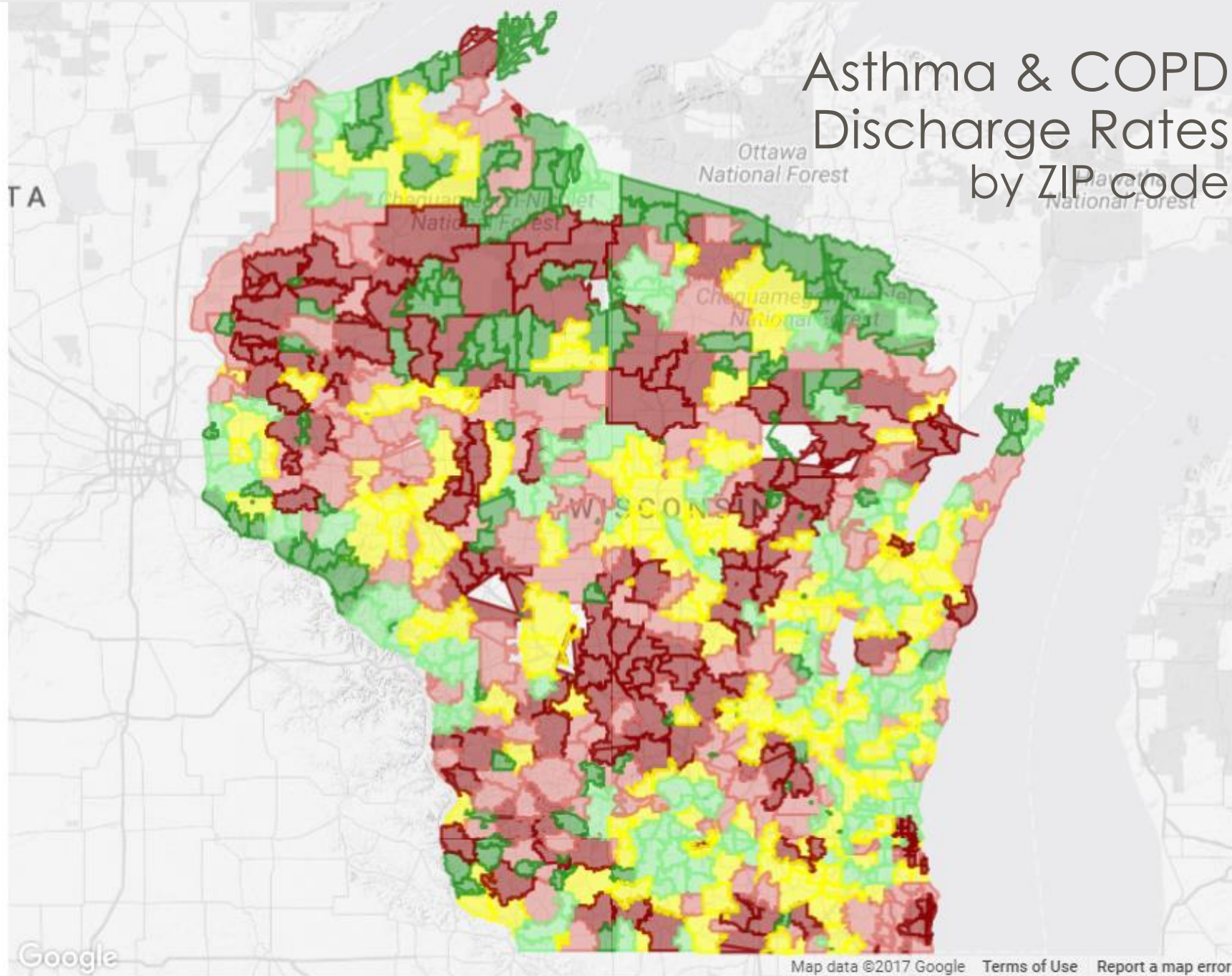
**Our Mission** is to provide people working to improve community health with accessible and useable data.

# About The Project

## 3 Goals:

- (1) Neighborhood health data
- (2) Geography at census tract or lower
- (3) Reasonable cost (i.e. affordable)

# Asthma & COPD Discharge Rates by ZIP code



Asthma+COPD Discharge Rate

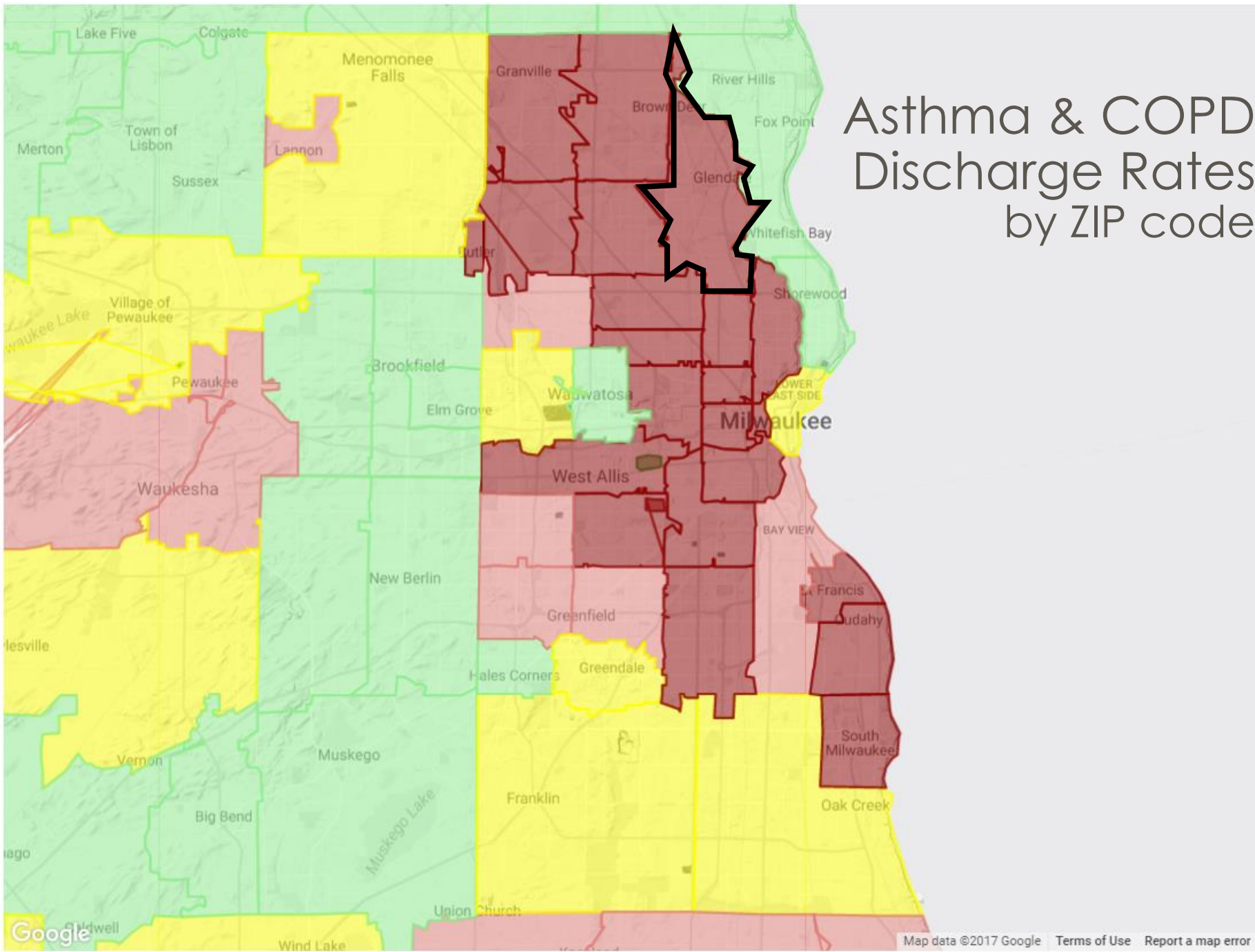
lowest 20%

highest 20%

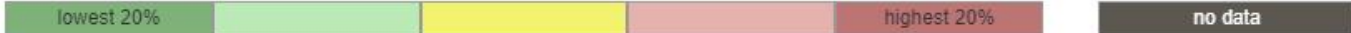
no data

We want data at the  
neighborhood level,  
  
but how do we get it?

# Asthma & COPD Discharge Rates by ZIP code

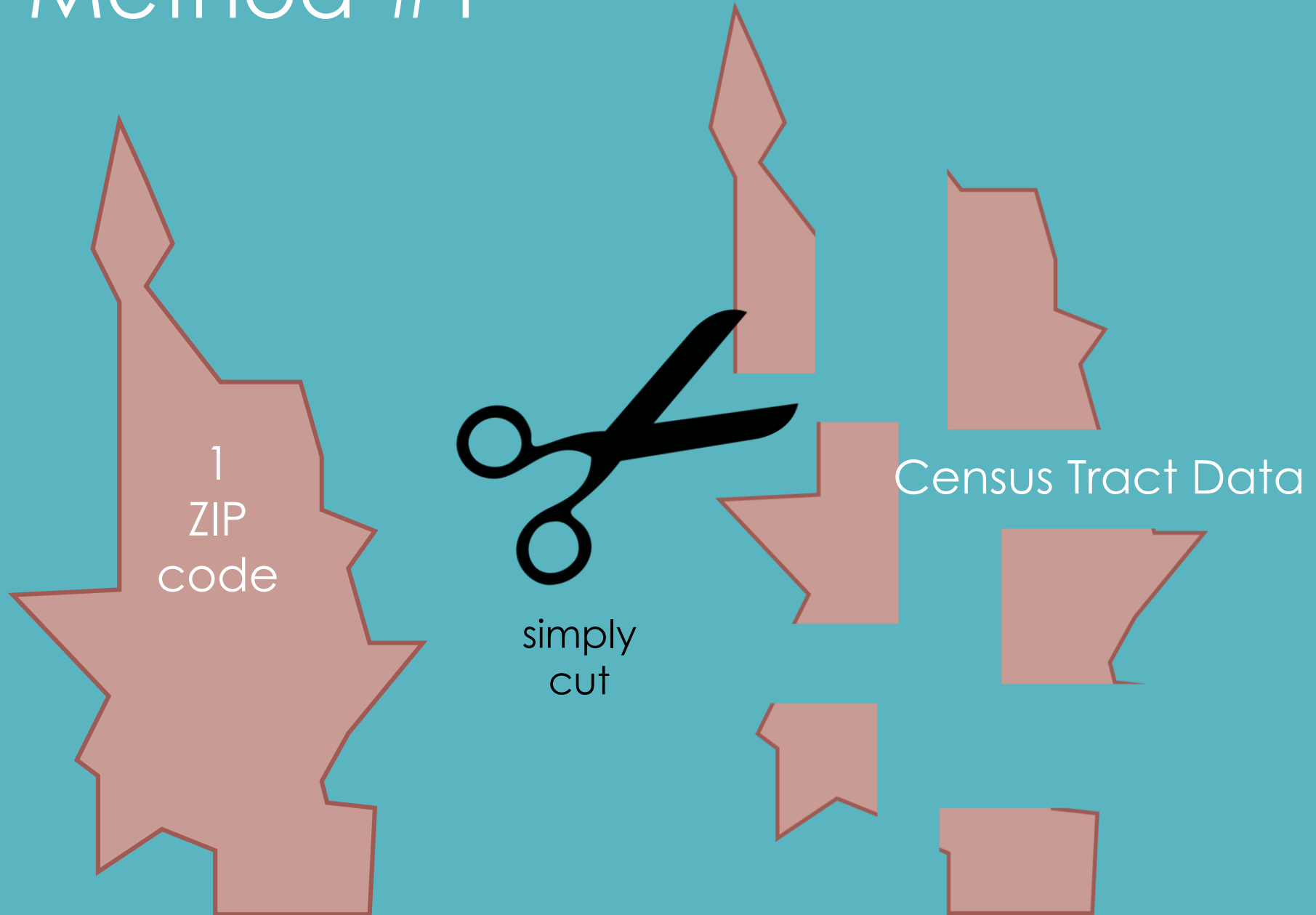


Asthma+COPD Discharge Rate

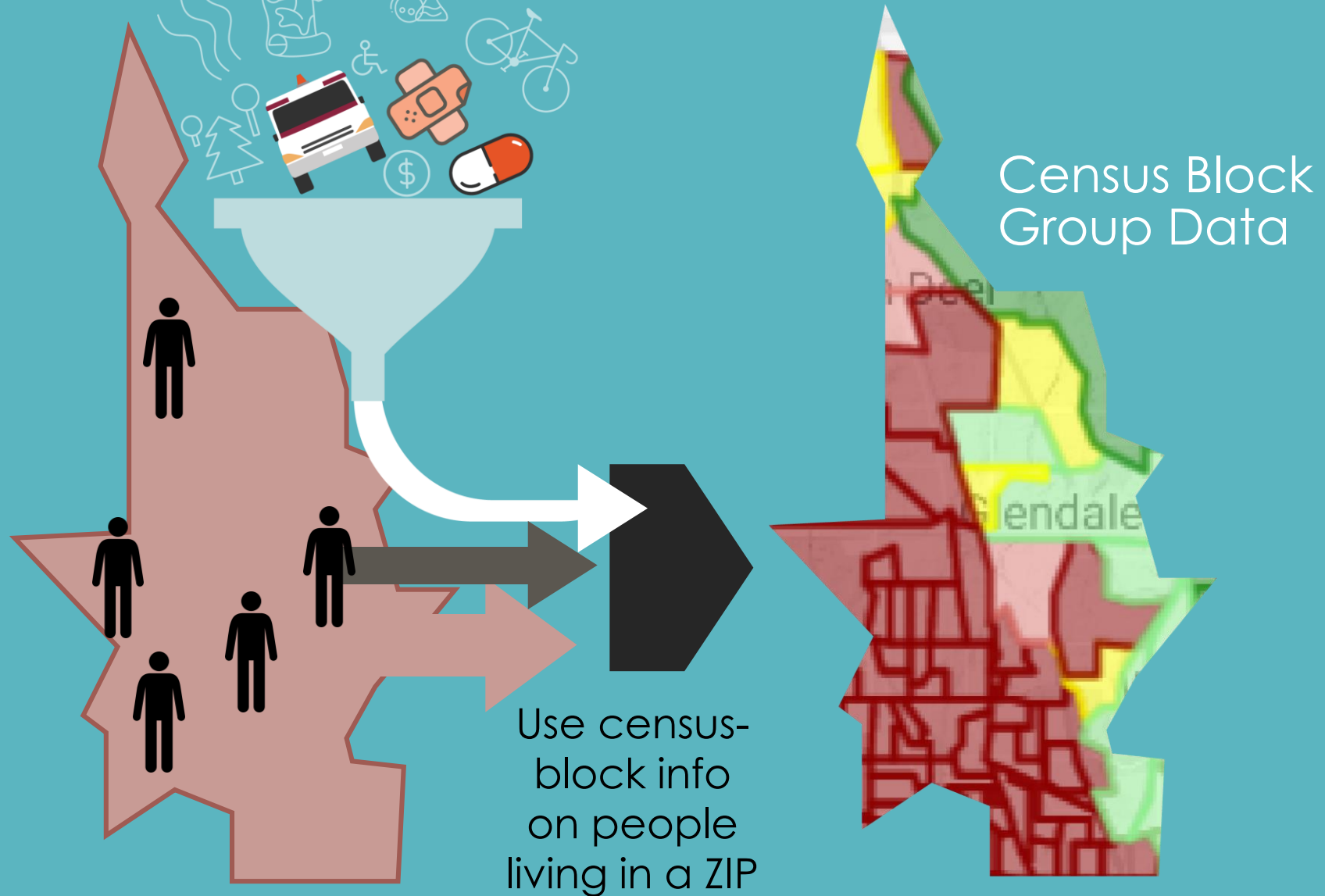




# Method #1

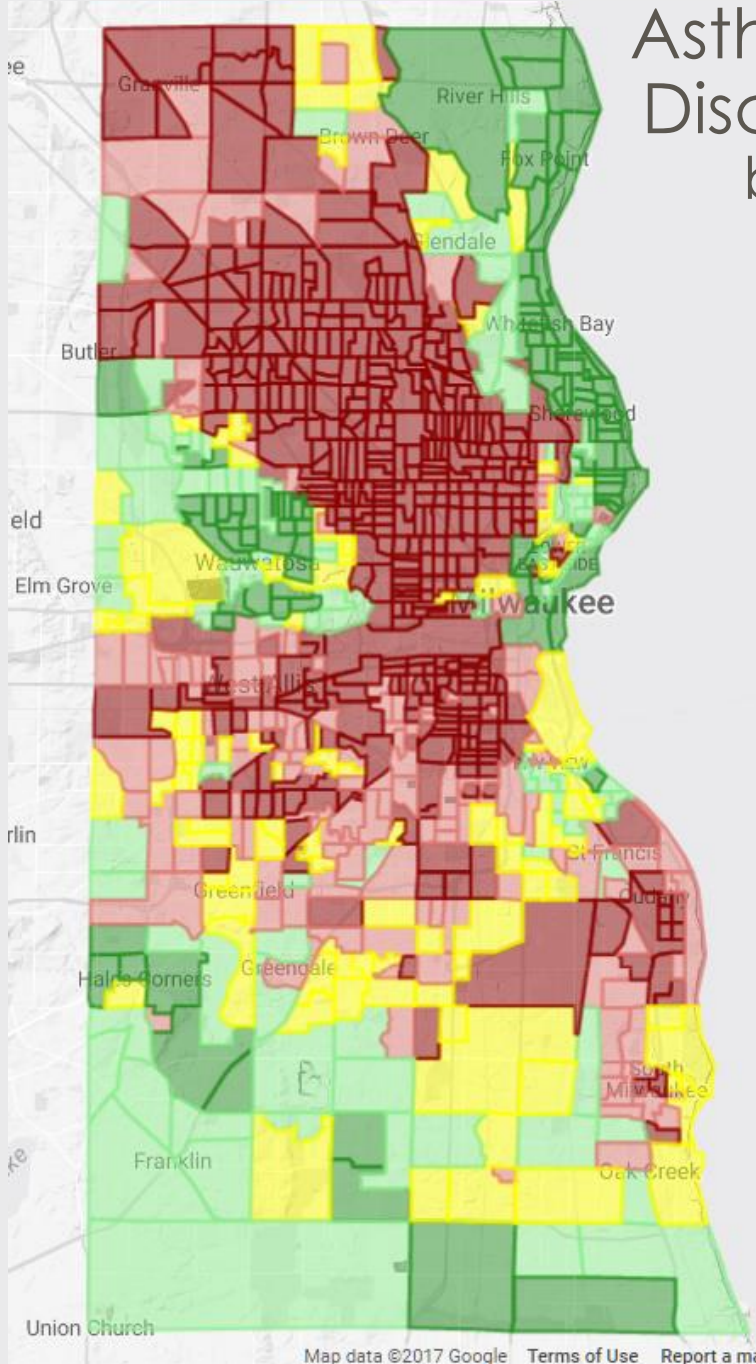
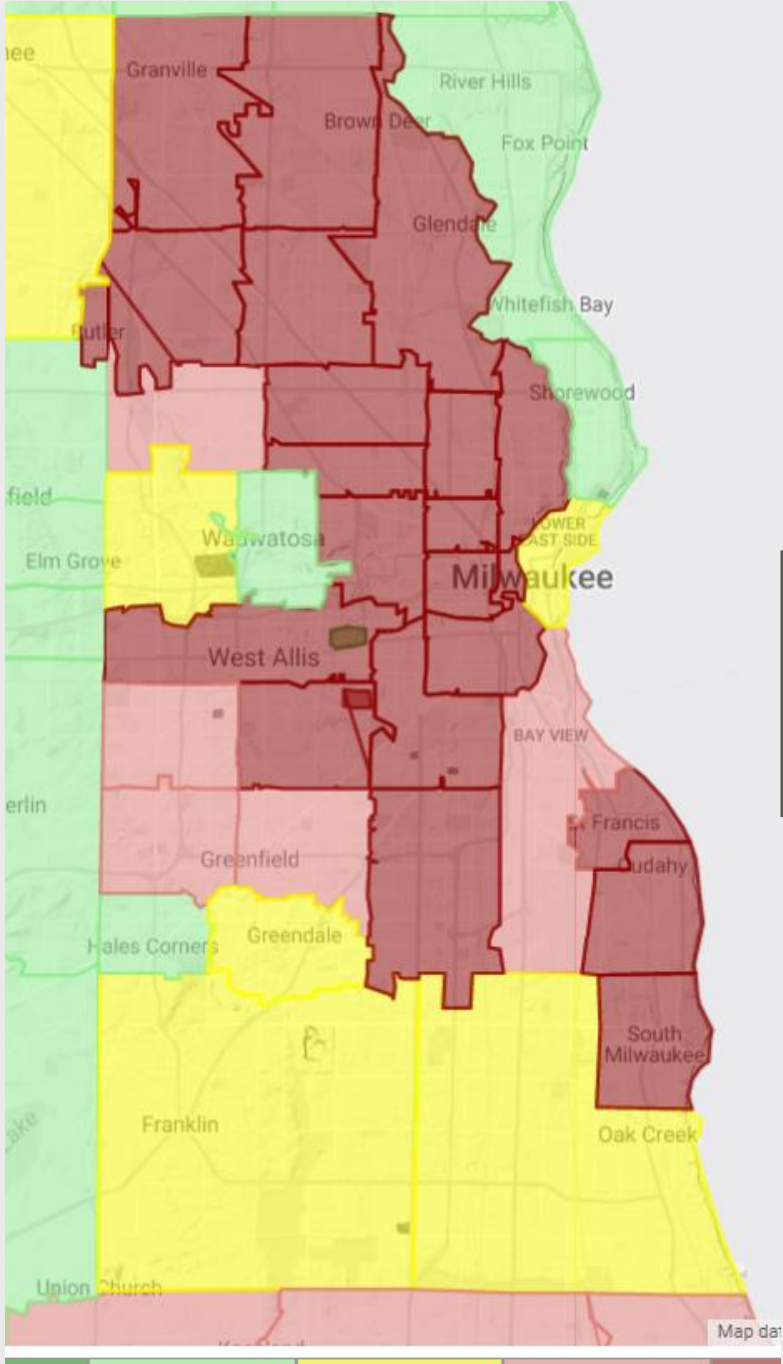


# Method #2





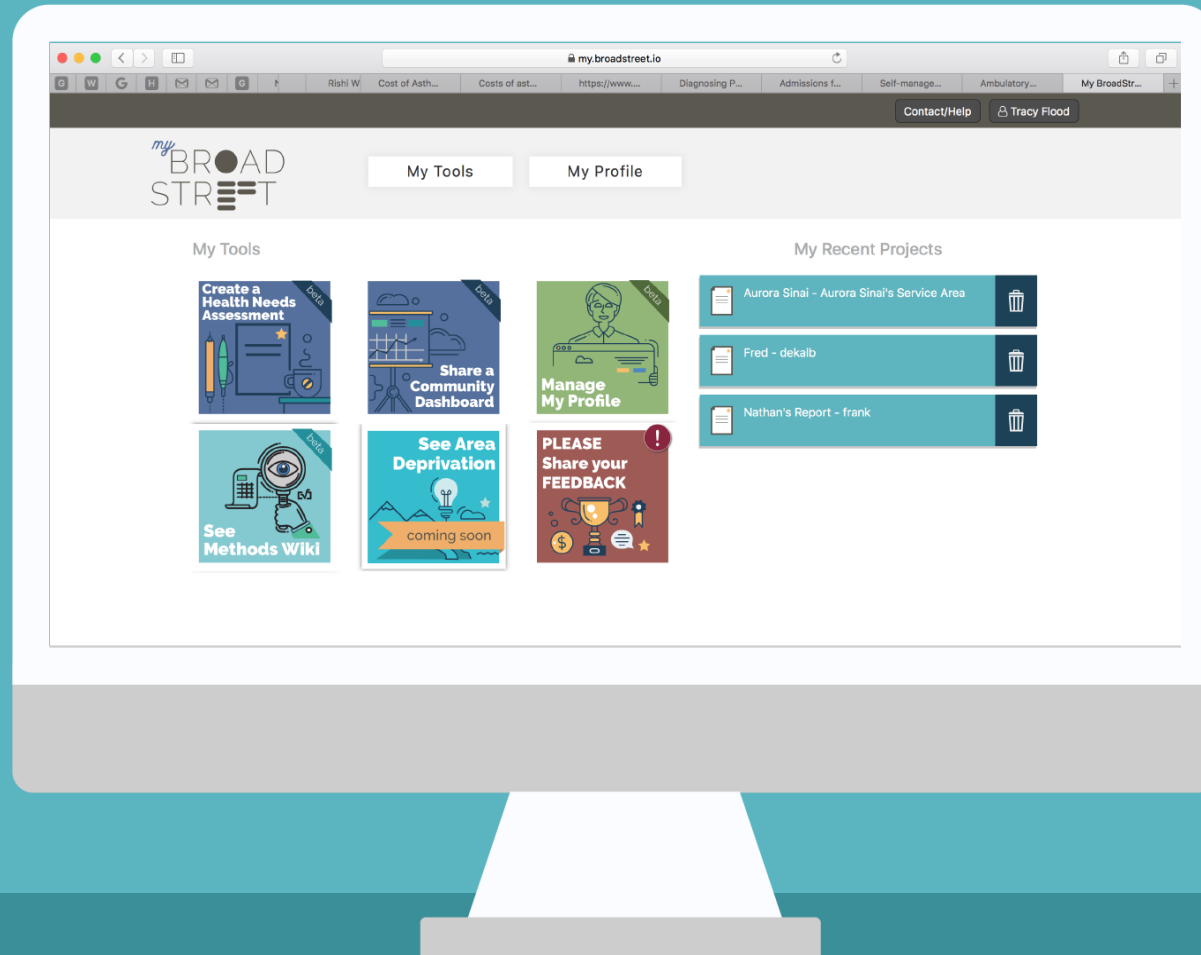
# Asthma & COPD Discharge Rates by ZIP & Census Block Group



# What next?

- More data.
- More indicators.
- More areas.
- More models.
- More ideas?
- More fun!

# ...And Add it to Software



## Contact Info.

Tom@broadstreet.io  
414-914-8571 (call or text)

Tracy@broadstreet.io  
217-419-6645 (call or text)

