

Milwaukee Fire Department Community Paramedic Program



Captain Michael Wright NREMT-P CPMIH TEMS

Topics

- ▶ Introductions
- ▶ What's a Paramedic?
- ▶ Our current options.
- ▶ What's a Community Paramedic?
- ▶ How are the visits structured??
- ▶ Program results.
- ▶ Summary and wrap up.



Captain Michael Wright

- ▶ MFD MIH coordinator
- ▶ Paramedic
- ▶ Tactical EMS (TEMS) service-director
- ▶ EMS instructor II
- ▶ Former U.S. Army Paratrooper
- ▶ Former U.S. Air force Loadmaster
- ▶ Blessed to have the opportunity to present for you!

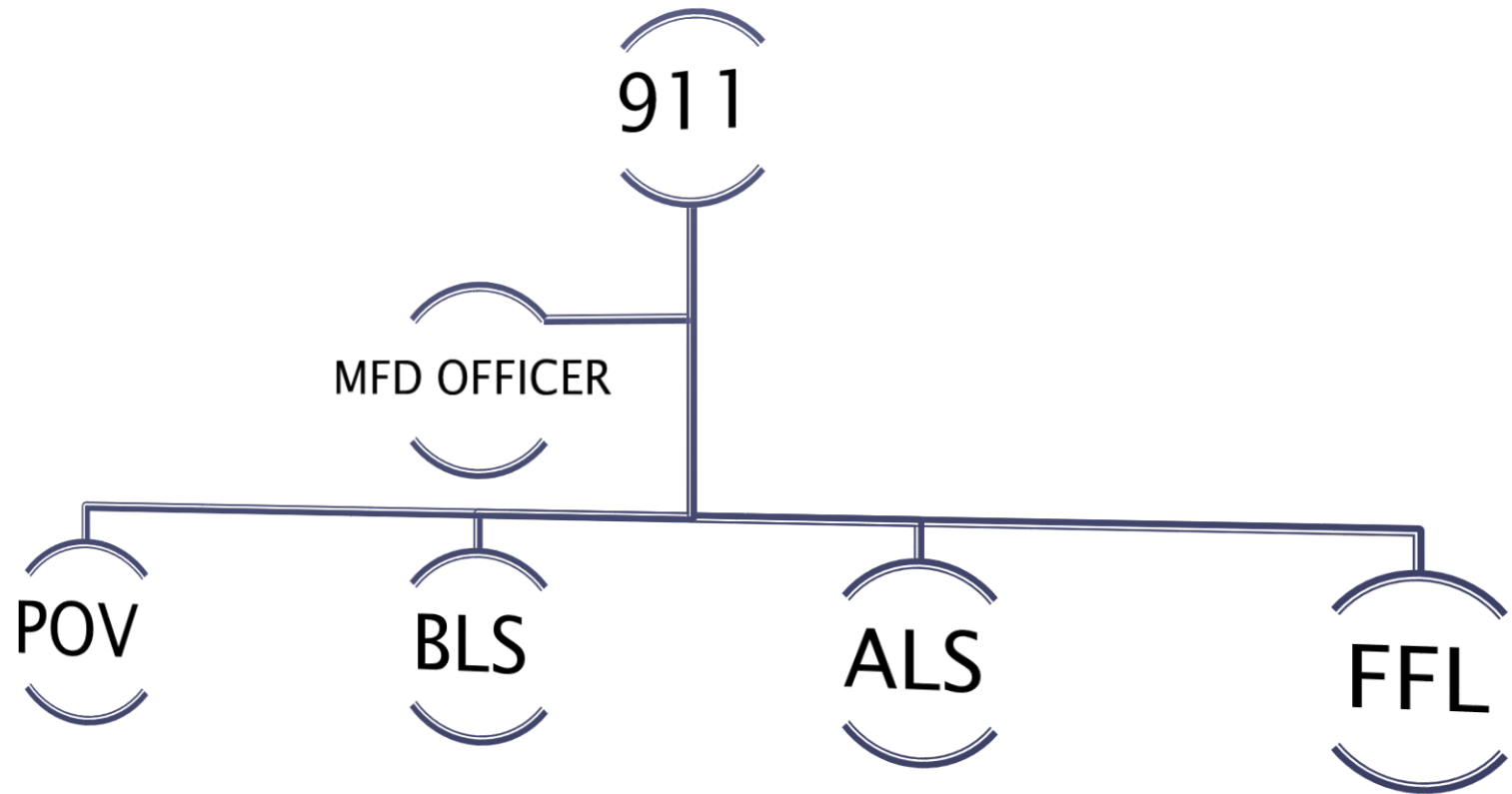


What's a Paramedic?

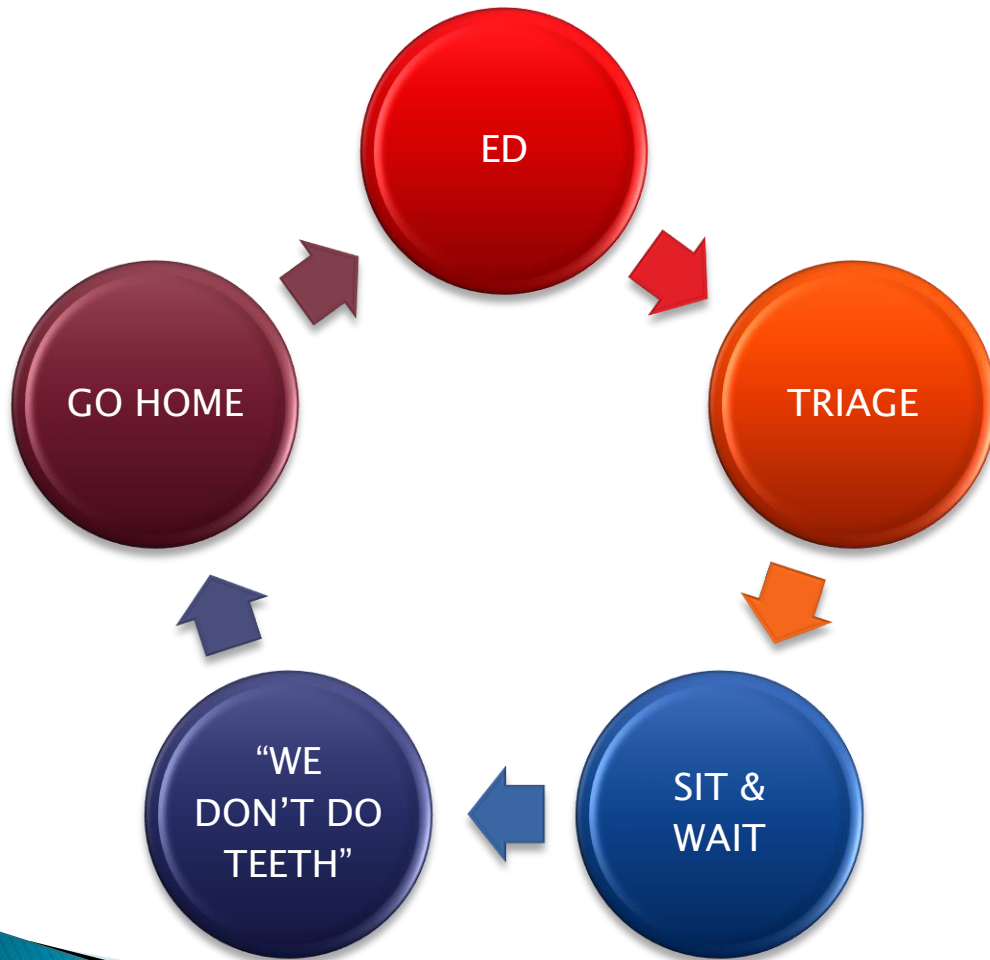
- ▶ Firefighter first!
- ▶ EMT–Basic second! 200 hours
- ▶ National Registered Paramedic
- ▶ ~1500 hours of initial training.
- ▶ Biannual recertification.
- ▶ Scope of practice ranges from RSI–needle decompression. (and everything in between)
- ▶ Duties are performed wherever the event occurs!! 24/7/365



Our current options....



And then.....



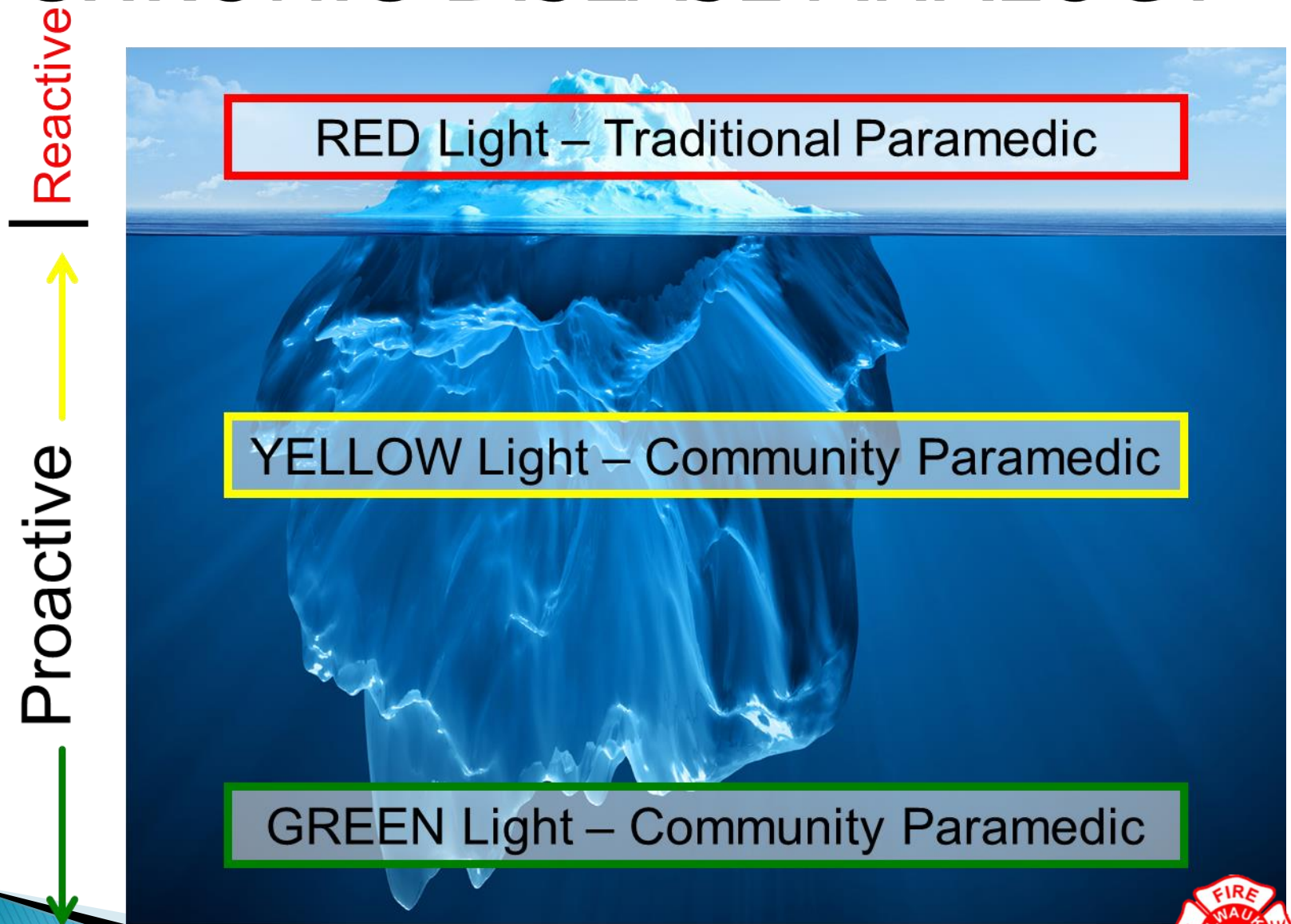
What's a Community Paramedic?

- ✓ Milwaukee Fire Department responded to 76,000+ EMS runs in 2017!!
- ✓ Over 2.0 million EMS responses since 1976!
- ✓ Trained, disciplined, and practiced!
- ✓ Fills gaps without duplication.
- ✓ Expanded role vs. expanded scope!
- ✓ Received an additional 200–300 hours of training from UWM–CON to become a “Community Paramedic!”

Now we will not only be proficient in “red light”,
but “yellow light”
as well as “green light.”



CHRONIC DISEASE ANALOGY




Summary of the MFD Mobile Integrated Healthcare (MIH) program



How are the visits structured??

The service includes the following:

- ✓ 4 visit with in a 30 day period (hopefully)
 - ✓ Visit 1 – Thorough interview to include a health self assessment, home safety check, asthma environmental check, SDOH assessment (everything from roaches to rent), physical exam, and medication/disease education.
 - ✓ **Visit 2**– Conduct disease specific and general examinations. Follow up with the patients PCP for additional instructions between visits, biometric screening. Recommend or arrange PCP visit to keep patient out of the “**Red light**” zone.
 - ✓ **Visit 3**– Conduct disease specific and general examinations, biometric measurement introduce patient to Hayat pharmacist for medication reconciliation and referral.
 - ✓ **Visit 4**–reeval patient through a complete exam to include the follow up self health assessment, transfer care to a managed care organization and graduate the patient.
 - ✓ This process has shown significant improvement for patients that participate in the program. Let’s look at some results!!
- 

PROGRAM RESULTS

Month	# of Patients	Hours	911 Pre	911 Post	Change%
January	2	18.2	26	11	-58%
February	7	49.1	28	6	-79%
March	5	54.1	18	13	-28%
April	6	49.5	26	10	-62%
May	8	49.46	58	28	-52%
June	3	30.85	49	24	-51%
July	4	43.8	48	11	-77%
August	2	25.9	19	1	-95%
September	4	23.5	44	31	-30%
October	2	21.8	23	2	-91%
November	2	48.3	37	5	-86%
December	0	0	0	0	0%
Totals	45	414.51	376	142	-62%



The patient chain of care.....



What happens after the patient completes the program?

- ▶ The patient receives a certificate and “graduates!”
- ▶ Continue to monitor 9-1-1 usage to gauge effectiveness of the program.
- ▶ Periodically reach out to let them know that we care and to answer any questions that remain.
- ▶ If patient has significant relapse we have the capability to enroll the patient again!



What have we learned?

- ▶ There are many layers to the onion.
- ▶ This will not be easy.
- ▶ Is it worth the effort?

YES!!

- ▶ Our program has shown a consistent positive response in the majority of patients that graduate the program!
- ▶ This is about behavior modification.
- ▶ For the record, a pamphlet won't do it!!
- ▶ Our Community Paramedic house is staffed and open for business.
- ▶ We have the largest and best trained cadre of Community Paramedics in the State of Wisconsin!

THANK YOU FOR YOUR TIME!!!

