



MILWAUKEE HEALTH CARE

PARTNERSHIP

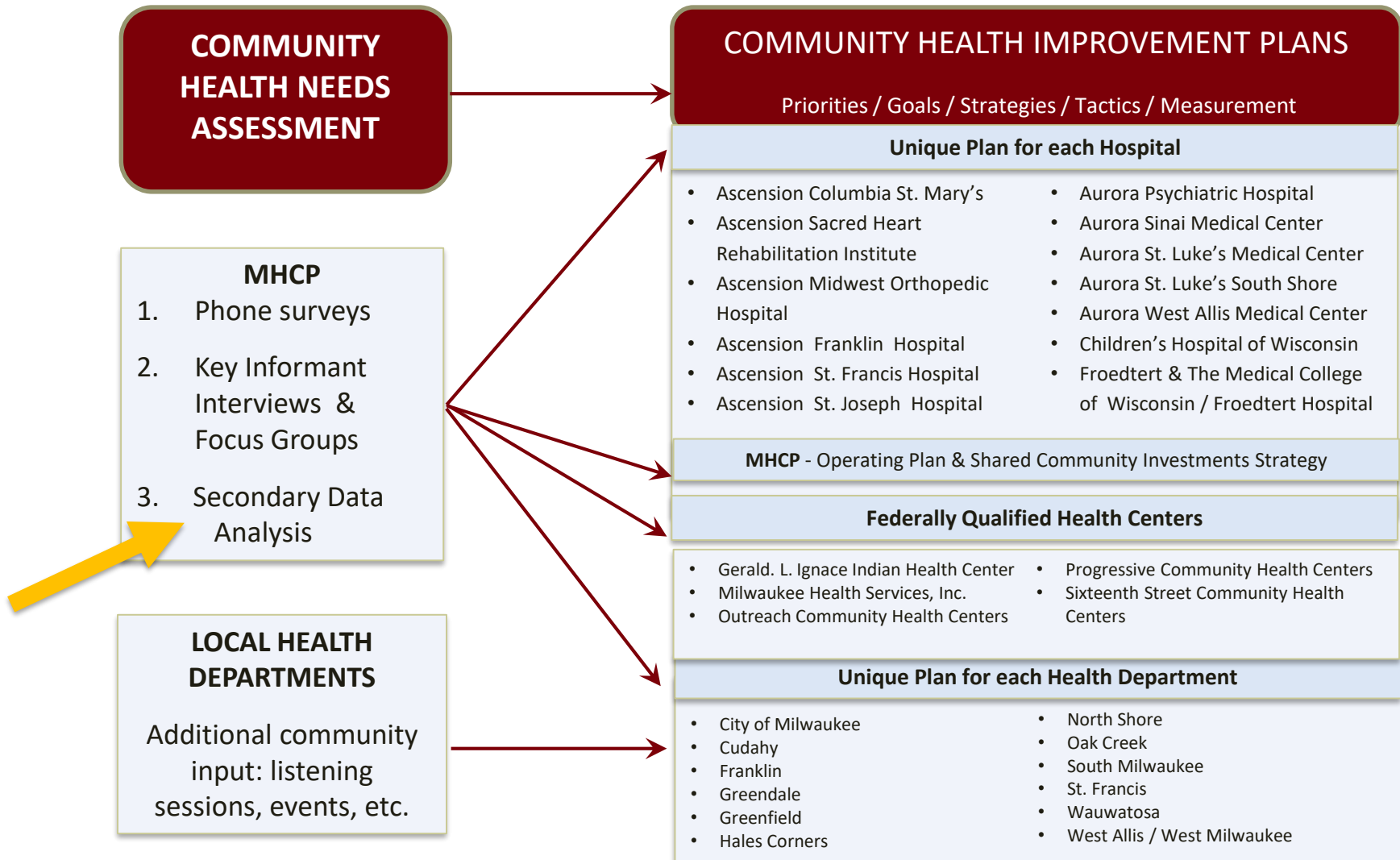
Milwaukee County 2018-19 Community Health Needs Assessment

presented to the

**Data You Can Use
Health Users Group**

January 23, 2019

Collaborative Community Health Improvement Planning - Milwaukee County



Three Data Sources

Community Health Survey 2018

- 14 minute phone survey of 1,312 adults in Milwaukee County (> 60 Q)
- Including ~ 20 additional questions if child identified in household
- Based on CDC's BRFSS model, 15 years trended data for most municipalities

Key Informant Interviews & Focus Groups 2018

- 40 key informant interviews
- 4 focus groups with 40 participants

Secondary Data *Health Compass Milwaukee*

- WI DHS / WI Interactive Statistics on Health (WISH)
- County Health Rankings
- US Census /2013 American Community Survey
- WHA Information Center

Top 5 Health Issues

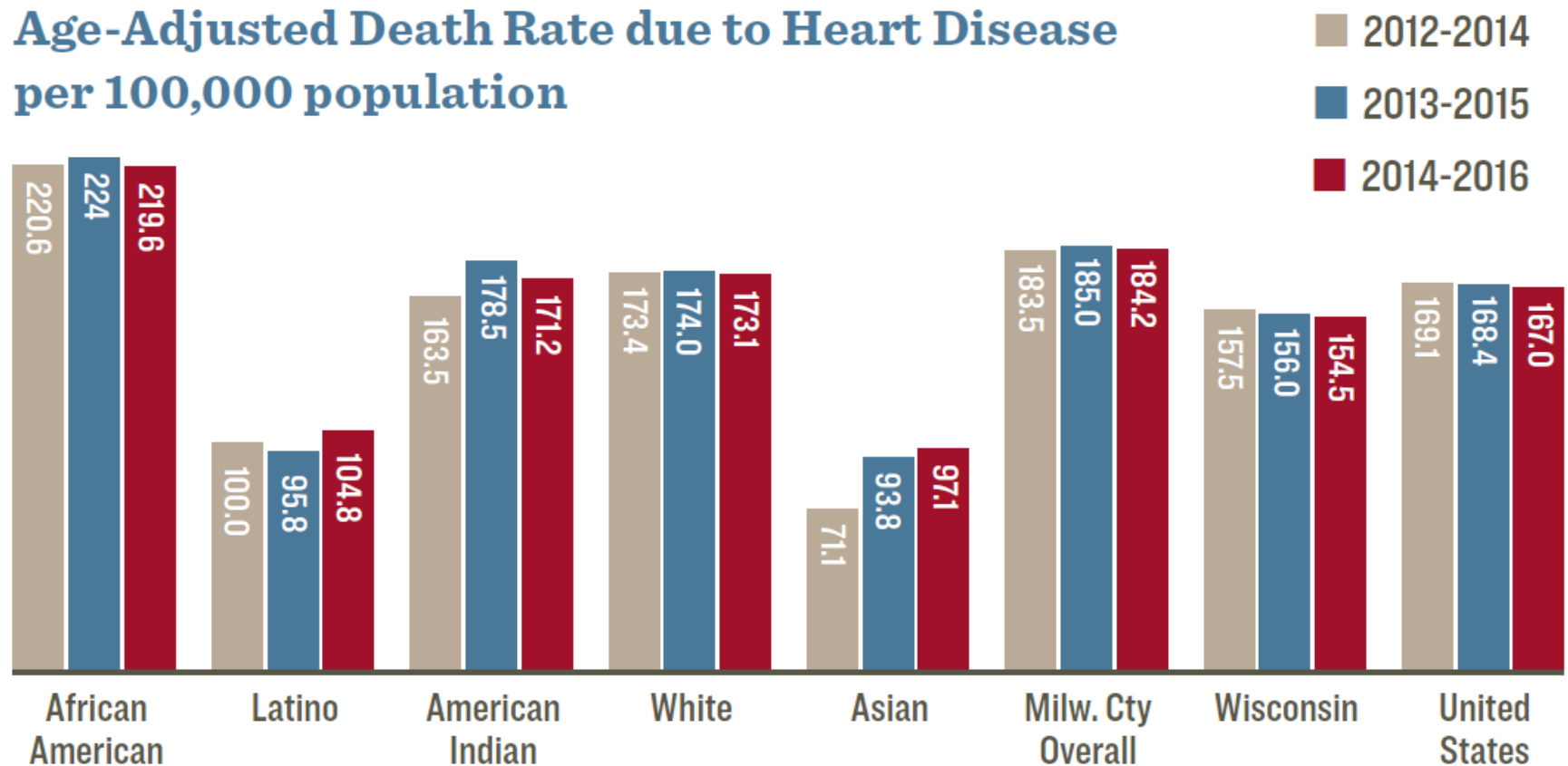
Community Survey Phone survey	Stakeholders Key informants and focus groups
1 Chronic Diseases	1 Mental Health
2 Substance Use	2 Access to Health Care
3 Access to Health Care	3 Violence
4 Infectious Disease	4 Substance Use
5 Violence or Crime	5 Nutrition and Healthy Food

Health Compass Milwaukee

- 260+ indicators / health outcomes and factors, comparative data

Chronic Disease

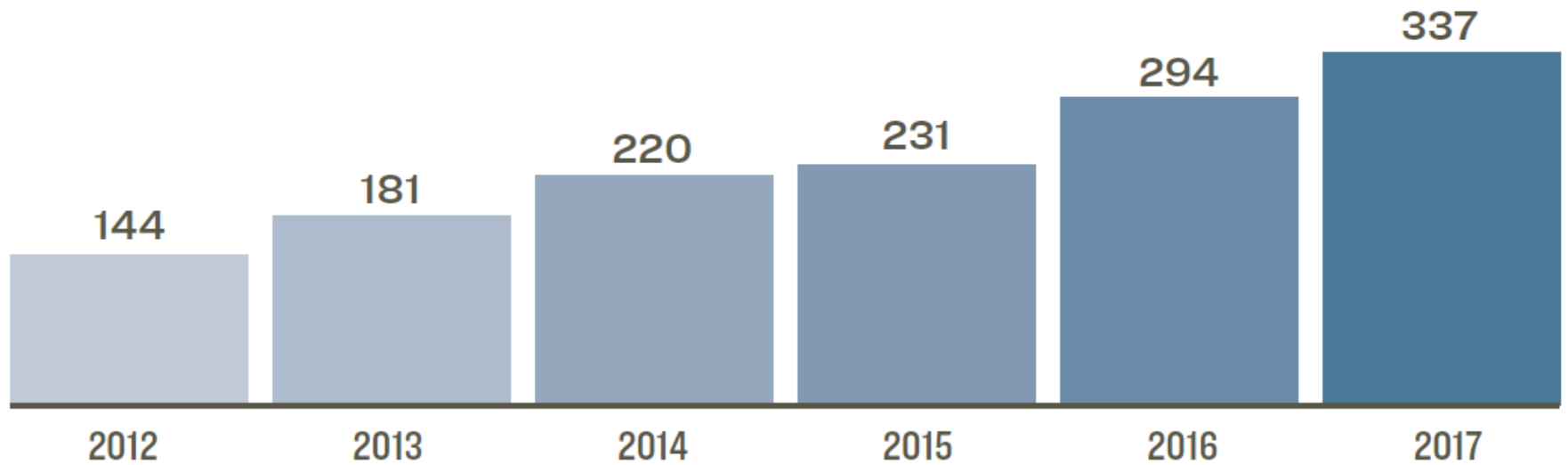
Age-Adjusted Death Rate due to Heart Disease per 100,000 population



Source: Wisconsin Department of Health Services and Health Compass Milwaukee

Substance Use

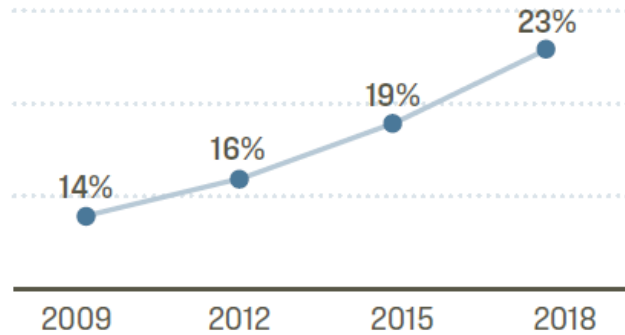
Opioid-Related Overdose Deaths in Milwaukee County



Source: Milwaukee County Medical Examiner and the Milwaukee County Opioid-Related Overdose Report 2012-2017

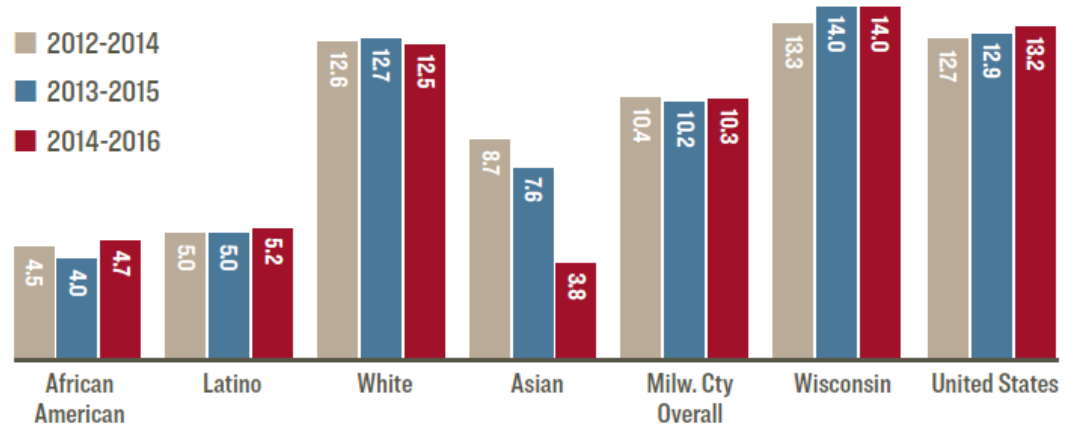
Mental Health

Adults with a Mental Health Condition in Milwaukee County



Source: Wisconsin Department of Health Services and Health Compass Milwaukee

Age-Adjusted Death Rate due to Suicide per 100,000 population



Source: Wisconsin Department of Health Services and Health Compass Milwaukee

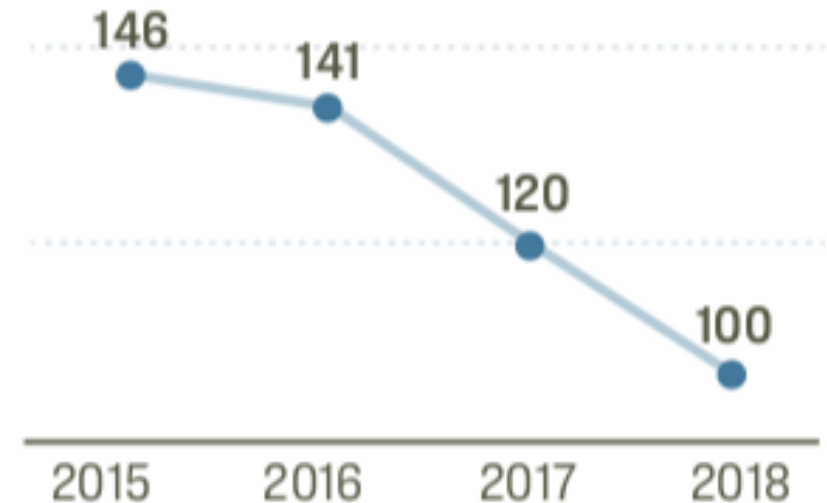
Violent Crime

Violent Crime Rate per 100,000 population



Source: Wisconsin Department of Health Services and Health Compass Milwaukee

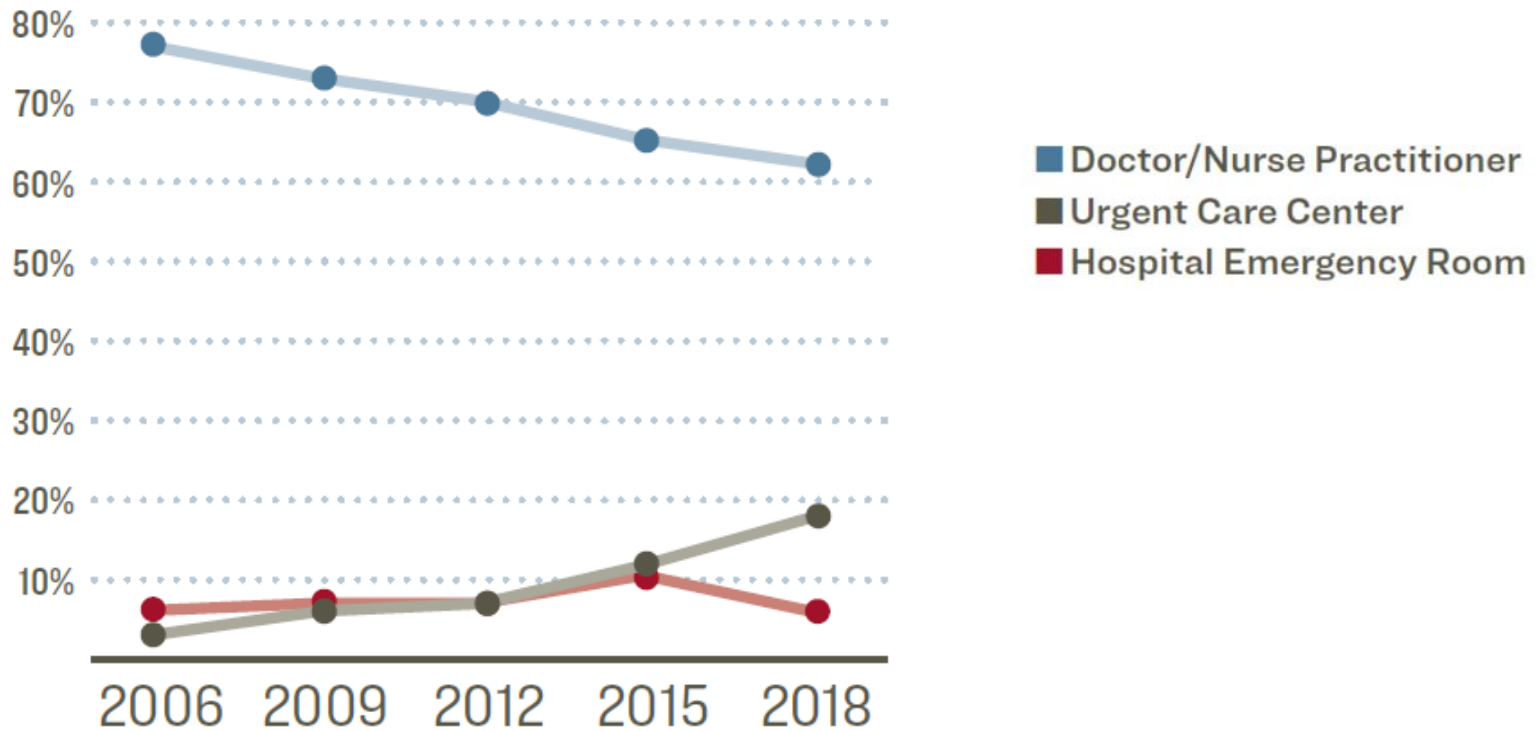
Milwaukee County Homicides



Source: Milwaukee Journal Sentinel Homicide Tracker

Access to Care

Access to Care When Sick



Source: Community Health Survey and Health Compass
Milwaukee



Health Compass Milwaukee is a dynamic website of the most current health indicators for Milwaukee county.

It provides mapping, reporting and comparative analytic tools to support research and planning for health care, public health, academic, philanthropic and government sectors, as well as the broader community.

It is a comprehensive source of health-related data about our community.

Health Compass Milwaukee Data Advisory Council

- launching late Spring -

**For more information
Health Compass Milwaukee**

[healthcompassmilwaukee.org
/about us/contact us](http://healthcompassmilwaukee.org/about-us/contact-us)

David Frazer, MPH, Associate Director
Center for Urban Population Health
414.219.4089
dfrazer@wisc.edu

**For more information
Community Health Needs Assessment**

[healthcompassmilwaukee.org/local reports](http://healthcompassmilwaukee.org/local-reports)
mkehcp.org/publications

Clare Reardon
Milwaukee Health Care Partnership
262.524.8995
creardon@mkehcp.org

MILWAUKEE HEALTH CARE

PARTNERSHIP